

SL65-54MAJ 395~415W

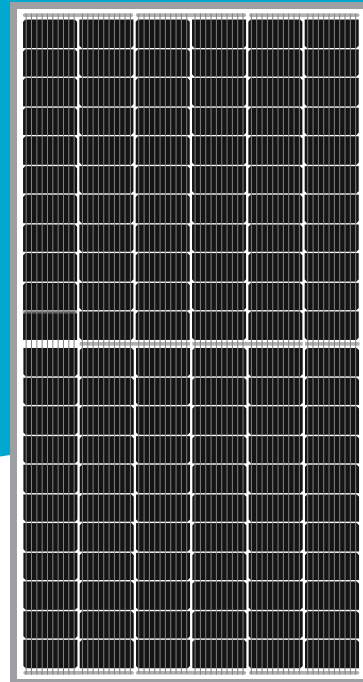
HALF-CUT Series

1,500V Monocrystalline PV Module

CERTIFICATIONS

IEC 61215, 61730 / UL 61730
 ISO 9001 : Quality Management System
 ISO 14001 : Environmental Management System
 ISO 45001 : Occupational Health & Safety System

Silver



FEATURES



Enhanced External Load/Impact
 Snow Load : 5,400 Pa
 Wind Load : 2,400 Pa



PID Resistance
 Enhanced Potential Induced Degradation Resistance



Fire Safety
 Spread of Flame Class A
 Burning Brand Class C



Higher output power
 0~+5Wp,
 Higher than rated power



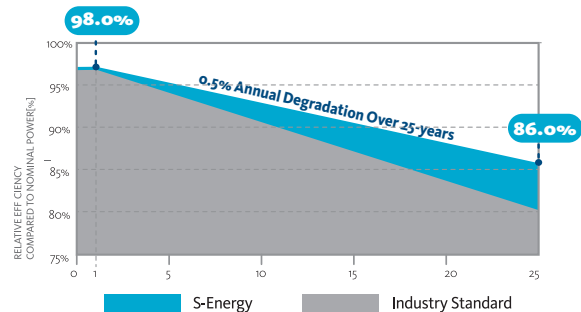
Excellent performance under low light conditions
 Cloudy days, mornings and evenings



WARRANTY

12-YEARS PRODUCT WARRANTY

25-YEARS LINEAR PERFORMANCE WARRANTY



S-Energy Co., Ltd.

S-Energy America
 (SEAI America, Inc.)

S-Energy Chile
 (S-Energy Chile SpA)

S-Energy Japan_Osaka Headquarters
 (S-Energy Japan Co., Ltd.)

S-Energy Japan_Tokyo Branch
 (S-Energy Japan Co., Ltd.)

A 20 PanGyoYeok-Ro 241BeonGil, BunDang-Gu, SeongNam-Si, GyeongGi-Do, Korea (3F MiraeAsset Tower)
 T +82-70-4339-7100 F +82-70-4339-7195E inquiry@s-energy.com

A 1170 North Gilbert Street, Anaheim, CA 92801, U.S.A.
 T +1-949-281-7897 F +1-949-281-7895E sales.us@s-energy.com

A Av. Cerro El Plomo N°5420, Office 402, Las Condes, Santiago, Chile
 T +56-22-604-8111 E sales.cl@s-energy.com

A 6F Hoshiwa City Building, 4-2-15 Kutaro-cho, Chuo-ku, Osaka, Japan
 T +81-6-4703-5388 F +81-6-4703-5387 E sales_jp@s-energy.com

A 6F Nishikicho BLDG., 1-8-11 Kandanishiki-cho, Chiyoda-ku, Tokyo, Japan
 T +81-3-6261-3759 F +81-3-6261-3769 E sales_jp@s-energy.com

Homepage

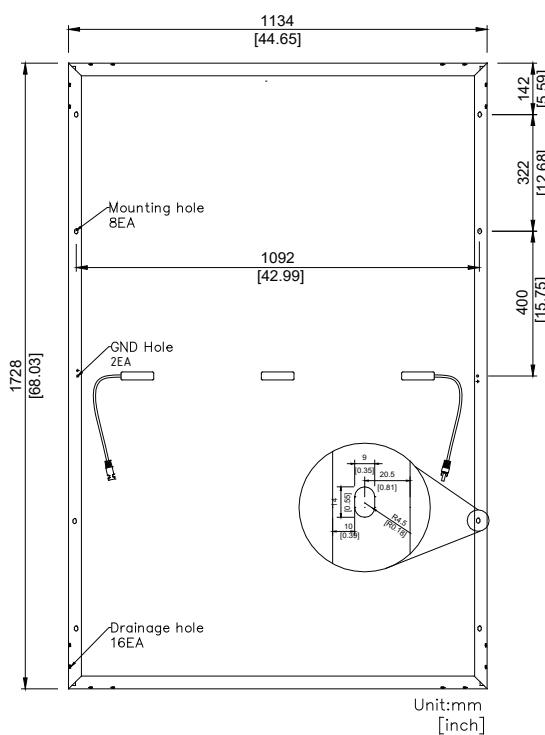


ELECTRICAL CHARACTERISTICS

STC (Irradiance 1,000W/m ² , module temperature 25°C, AM=1.5)	SL65-54MAJ-395Z	SL65-54MAJ-400Z	SL65-54MAJ-405Z	SL65-54MAJ-410Z	SL65-54MAJ-415Z
Rated Power (Pmax)	395W	400W	405W	410W	415W
Voltage at Pmax (Vmp)	30.70V	30.90V	31.10V	31.30V	31.50V
Current at Pmax (Imp)	12.87A	12.95A	13.03A	13.10A	13.18A
Warranted Minimum Pmax	395W	400W	405W	410W	415W
Short-Circuit Current (Isc)	13.63A	13.70A	13.77A	13.84A	13.91A
Open-Circuit Voltage (Voc)	36.90V	37.10V	37.30V	37.50V	37.70V
Module Efficiency	20.16%	20.41%	20.67%	20.92%	21.18%
Operating Module Temperature	-40°C to +85°C				
Maximum System Voltage	1,500V				
Fuse Rating	25A				
Maximum Reverse Current	33.75A				
Power Tolerance	0 ~ +5W				

MECHANICAL CHARACTERISTICS

Solar Cells	Monocrystalline Cells 182x91mm
Number of Cells	54 Half Cells (6x18 Matrix)
Dimensions	1,728 x 1,134 x 35mm
Front Load	5,400Pa
Rear Load	2,400Pa
Weight	21kg
Glass	3.2mm High-Transmittance Low Iron Tempered Glass
Frame	Anodized Aluminum Frame (Silver)
J-Box	≥ IP68 with 3 bypass diodes
Output Cables	PV Wire (PV1-F), 12AWG (4mm ²), Cable Length : 350mm * cable length can be customized
Connectors	MC4 Compatible

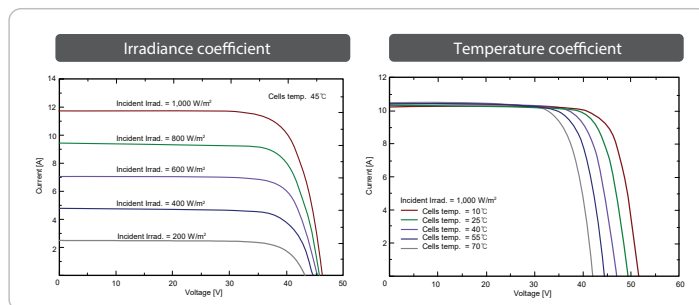


TEMPERATURE CHARACTERISTICS

Temperature coefficient of Isc	0.050 % / °C
Temperature coefficient of Voc	-0.290 % / °C
Temperature coefficient of power	-0.350 % / °C
NOCT (Tair 20°C ; Irradiance 800W/m ² ; Wind 1m/s)	44±2 °C

PACKING CONFIGURATION

Container	20'	40'
Modules Per Pallet	31pcs	31pcs
Pallets Per Container	6pallets	26pallets
Modules Per Container	186pcs	806pcs



REMARKS

- Pmax measurement tolerance : ±2.5%
- S-Energy uses triple A class simulator.
- Specification subject to change without prior notice.
- S-Energy reserves the rights of final interpretation.

NOTES

Installation instruction supplied with the module must be duly followed. For further information which is not mentioned on installation guides or directions, please contact to our technical service department.
· E-mail : Inquiry@s-energy.com